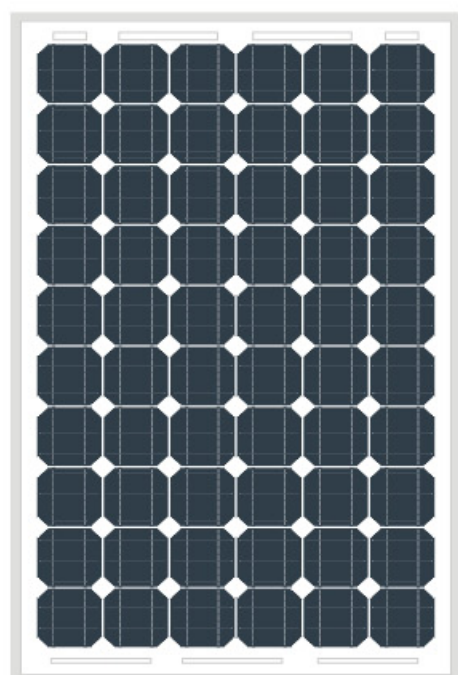


High-efficiency photovoltaic module using silicon nitride coated monocrystalline silicon cells.

- Solar Cell: High efficiency crystalline solar cell. Even if under the weak light, the solar module can produce maximum power output.
- Tempered glass: Anti-reflecting coating and high transmission rate glass increase the power output and mechanical strength of solar module.
- EVA and TPT: Using high quality EVA and TPT to prevent destroying and water.
- All frame: Without screw, corner connection. 8 holes on the frame can be installed easily.
- Junction box: Multi function junction box with water proof.
- Long lifetime: 25 years; Less power decrease.
- Good performance of preventing from atrocious weather such as wind and hails.
- Resisting moisture and etching effectively, not effect by geology.
- The certificate issued by international authority: ISO Quality Management system, CE.



Mechanical Characteristics

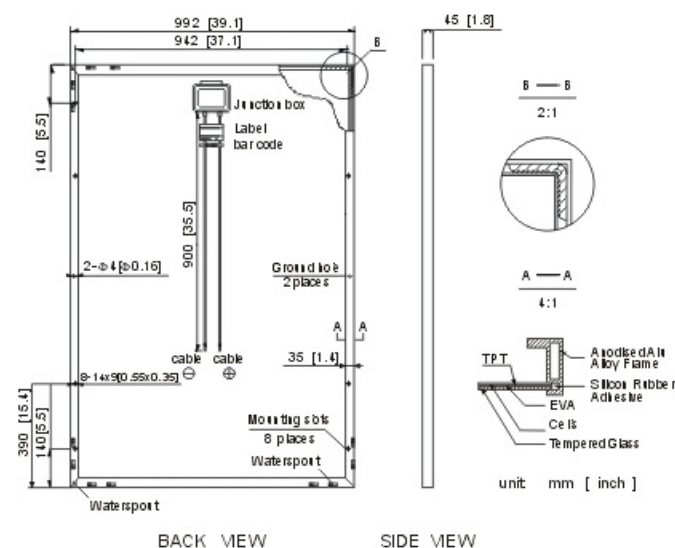
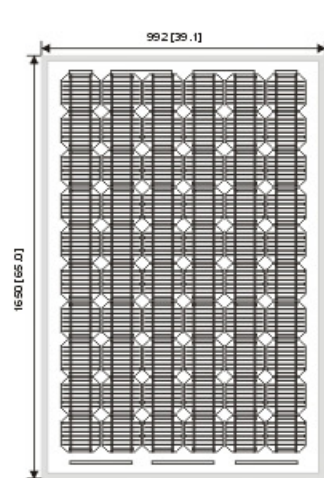
Cells Size (mm)	156x156
Modules Size(mm)	1650x992x45
No. of cells	60(6x10)
Weight (KG)	21
No. of Mounting Holes	8
No. of Waterspout	16

Temperature Coefficient

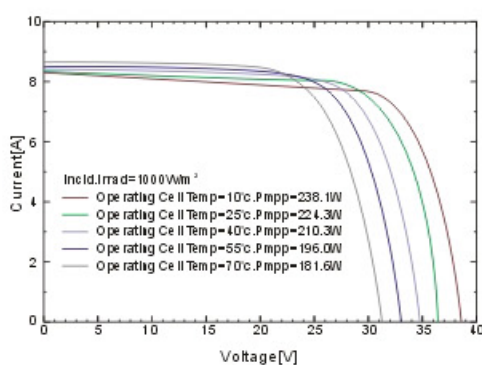
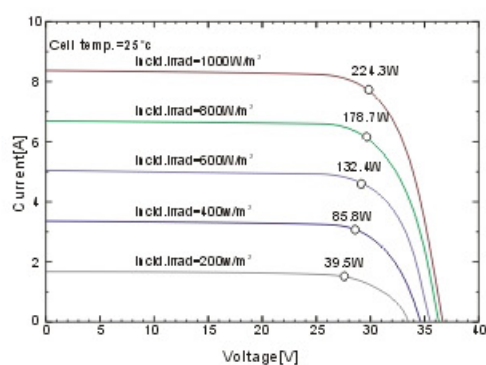
NOCT	47°C±2°C
Temperature coefficient of Isc	0.03%/°C
Temperature coefficient of Voc	-0.31%/°C
Temperature coefficient of Pmax	-0.37%/°C
Power Tolerance	±3%

Note: This publication summarizes product warranty and specifications, which are subject to change without notice. Additional information may be found on our web site: www.perlightsolar.com.cn

Module Diagram



Electrical Curves



Electric Characteristics

Model	PLM-200	PLM-205	PLM-210	PLM-215	PLM-220	PLM-225	PLM-230	PLM-235	PLM-240
Pm	200	205	210	215	220	225	230	235	240
Vmp	29.24	29.4	29.58	29.7	29.82	30.24	30.48	30.54	30.72
Imp	6.84	6.96	7.01	7.24	7.38	7.44	7.55	7.69	7.81
Voc	35.43	35.65	35.7	35.8	35.88	36.12	36.75	36.84	36.9
Isc	8.06	8.2	8.26	8.37	8.53	8.55	8.57	8.58	8.73
Maximum system voltage	1000VDC	1000VDC	1000VDC	1000VDC	1000VDC	1000VDC	1000VDC	1000VDC	1000VDC

STC: Irradiance 1000W/m², Temperature 25°C, AM=1.5